

Indoor TWTA Product Range



**Europe's dedicated satellite amplifier manufacturer
and equipment specialist**

www.space-path.com

Indoor Amplifiers

The STR series rack-mount TWTAs incorporate an easy to operate, colour touch screen interface with multi-function selector wheel. The GUI display provides clear, user-friendly status information on the amplifier's operation, including RF output power monitoring, heater, helix monitoring, and TWT temperature.

Set-up screens are intuitive and simple to manage. The touch panel allows full local control and monitoring of all amplifier parameters, including automatic level control, system event logging and graphical trend analysis. Remote control operation is also provided via RS485 or through an Ethernet interface. Additionally, a web page interface is also available. Should a redundancy system be required, this can be set up and controlled via the touch screen. All changes to operating parameters can be locked and password-protected, if required.



Display features

- Easy-to-use, colour touch screen control
- Multi-function selector wheel
- Performance data and events log
- Web page interface
- Lock & password-protection

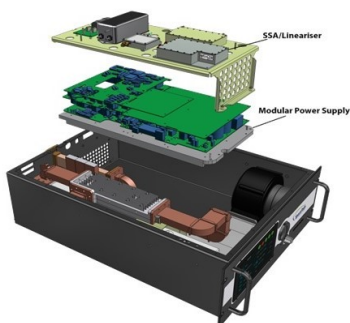
Amplifier features

- Wide mains input range
- Circulator, receive band filter and harmonic filter included as standard
- Forward & reverse power monitoring
- Ethernet connection
- USB connection

Options

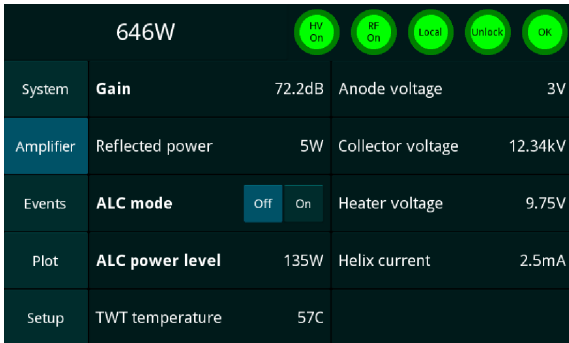
- Internal BUC
- 10MHz autosense reference
- Lineariser
- Redundancy control
- Quick waveguide fittings

Modular Construction for Long Term Serviceability



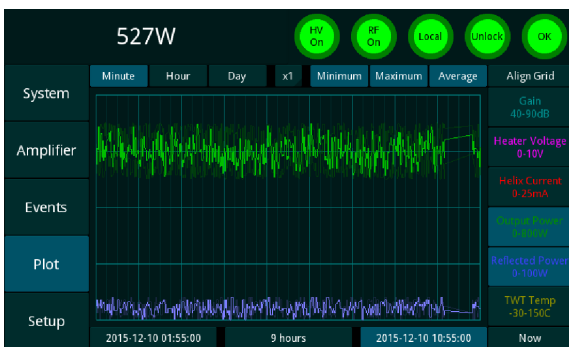
- Modular power supply which can be changed out for ease of use and rapid maintenance
- Easy access of blower assembly SSA, lineariser and BUC assemblies

Touch Screen Control



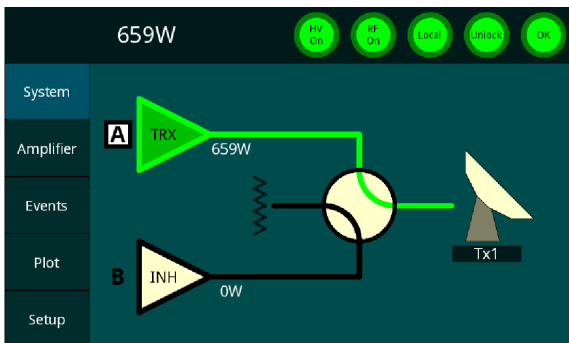
Amplifier screen

- Display and control TWTA parameters:
 - ♦ Attenuator
 - ♦ Helix voltage and helix current
 - ♦ Temperature
 - ♦ Reflected RF power
- Fault reset
- (ALC) constant power setting



Plots screen

- User-adjustable time scale
- Max & min data over user-selected period
- Critical data before and after alarms
- Displays four user-selected TWTA parameters over time, including alarm & fault tags:
 - ♦ TWT temperature
 - ♦ Cathode current



Redundancy screen

- Multiple TWTA system control built-in
- Display and control of redundancy and polarisation switches
- Configurable for stand-alone, 1:1 and 1:2 systems

Power/frequency chart

Power Output (w)	Band	C	X	Ku	DBS
	750	750	750	750	750
	500				500
	400	400	400	400	

Indoor TWTA Product Range

400W Output

Type	Band	Freq. (GHz)	TWT Power (W)	TWTA Power (W)
STR1140	C	5.85 - 6.425 5.85 - 6.650 5.85 - 7.025	400	350
STR1240	X	7.90 - 8.40	400	350
STR1340	Ku	13.75 - 14.50 12.75 - 14.50 13.75 - 14.80	400	350

500W Output

Type	Band	Freq. (GHz)	TWT Power (W)	TWTA Power (W)
STR2450	DBS	17.3 - 18.1 17.3 - 18.4	500	420

750W Output

Type	Band	Freq. (GHz)	TWT Power (W)	TWTA Power (W)
STR2175	C	5.85 - 6.425 5.85 - 6.650 5.85 - 7.025 6.425 - 7.025	750	650
STR2275	X	7.90 - 8.40	750	650
STR2375	Ku	13.75 - 14.50 12.75 - 14.50 13.75 - 14.80	750	650
STR2475	DBS	17.3 - 18.1 17.3 - 18.4	750	650

Setting new standards in customer-driven innovation and performance

SpacePath Communications designs, manufactures and distributes an expanding range of innovative satellite uplink amplifiers and associated equipment, including RF high-power amplifiers (HPA), solid-state amplifiers (SSPA/SSPB), redundant system controllers and sub-systems.



SpacePath Communications Ltd.
Unit 4, Bartley Point, Osborn Way, Hook, Hampshire, RG27 9GX, UK.
Tel: +44 1256 760525 Email: sales@space-path.com
www.space-path.com